

# RevealPRO™

AFFORDABLE, HIGH-PERFORMANCE  
HANDHELD THERMAL IMAGING

## KEY CAMERA SPECS

- 320 x 240 Thermal Sensor
- 32° Field of View
- 40 to 626F Temperature Measurement
- 12 inches to 1,800 feet Distance
- Works Day & Night
- 300 Lumen LED Flashlight

Seek  
thermal



RevealPRO is our most advanced handheld thermal imaging camera yet. Highly durable and easy to use, RevealPRO combines a high-performance 320 x 240 thermal sensor with intuitive software to help you work smarter. And, when you need it, a powerful 300-lumen LED light is available at the touch of a button. Offering adjustable thermal span, level, and emissivity settings, the RevealPRO delivers unprecedented high-resolution thermal imaging and software capabilities available at this price.

Designed and Manufactured in Santa Barbara, California with Global Components.

Product Name:	Seek RevealPRO
Product Type:	Thermal Imaging Camera
Seek RevealPRO Color: Carbon Fiber	UPC: 855753005655 Part Number: RQ-AAAX
Export Regulations	Subject to US EAR Export Regulations.

Single Unit	
Included in the box:	<ul style="list-style-type: none"><li>• Seek RevealPRO</li><li>• Wrist Lanyard</li><li>• Welcome Guide</li><li>• USB Cable</li></ul>
Device Dimensions (H x W x D)	5 x 2.4 x 1.2 inches
Device Weight:	6.25 ounces
Box Dimensions (H x W x D)	7 x 3.75 x 1.75 inches
Box Weight:	13.025 ounces
Master Pack	
Included in the Master Pack	80 Units
Master Pack Dimensions	20 x 15 x 16 inches
Master Pack Weight	65 pounds

## KEY FEATURES

**320 x 240 High-Resolution Thermal Sensor**  
76,800 temperature pixels for maximum image clarity and sensitivity

**Adjustable Emissivity**  
Calibrate for reflective surfaces when accuracy is critical

**Wide, 32-Degree Field of View**  
Easily scan a large area to identify potential hazards in seconds

**Long-Lasting Rechargeable Battery**  
Up to 4 hours of continuous thermal imaging in Normal MODE

**See Through the Dark. Light Optional.**  
300 lumen LED flashlight available at the touch of a button

**Best-in-Class Object Temperature Range**  
Measure temperatures from -40° to 626°F

## BENEFITS & USES

**Accurately Inspect Mechanical and Electrical Equipment**  
Diagnose and assess the problem source quickly

**Safely Monitor Hazardous Environments**  
Evaluate potentially dangerous situations from a safe distance

**See More Thermal Detail Where You Need it Most**  
Level and span controls let you isolate and capture the details that matter

**Durable, All-In-One Device**  
Rugged, rubberized casing with Corning® Gorilla® Glass and intuitive controls go and work where you do

**Time of Day Won't Slow You Down**  
Safely examine any job site in daylight or total darkness

**Easily Document and Share**  
Save thermal images directly to the 4GB internal hard drive

## TECHNICAL SUMMARY

SPECIFICATIONS	DESCRIPTION
Thermal Sensor	320 x 240 (76,800 pixels)
Detection Distance	12 inches to 1,800 feet
Field of View	32 Degree FOV
Temperature Range	-40°F to 626°F
Frame Rate	>15 Hz FastFrame in Normal MODE
Focus	Fixed Focus
Flashlight	300 Lumen LED
Display	2.4" Color with Corning® Gorilla® Glass
Microbolometer	Vanadium Oxide
Thermal Sensitivity	< 70 mK
Spectral Range	7.5 - 14 Microns
User Interface	Self-Contained Device with 3 Button Navigation
Temp. Display Scale	Fahrenheit, Celsius, or Kelvin
Color Palettes	9 Options (Grayscale and High-Contrast)
Storage Media	4GB Internal Drive (>4,000 images)
Battery	Up to 4 Hours Thermal Imaging in Normal MODE

## 300 LUMEN LED LIGHT



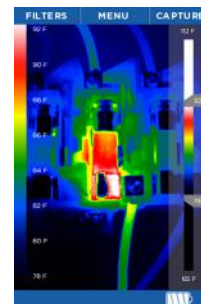
Seek RevealPRO combines powerful thermal insight and a high-performance LED flashlight in one durable device.

## USER INTERFACE



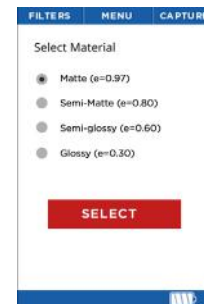
### PHOTOS

Capture and save thermal images directly to the internal 4GB hard drive



### LEVEL & SPAN

Isolate and capture the thermal details that matter

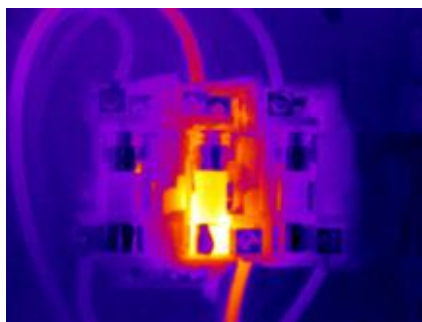


### EMISSIVITY

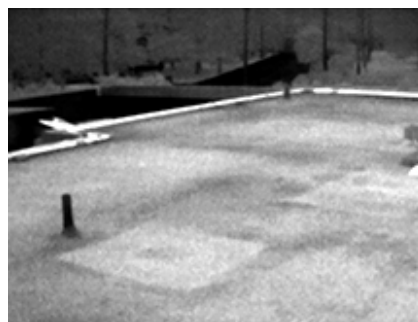
Calibrate for reflective surfaces when accuracy is critical

www.tulon24.ru

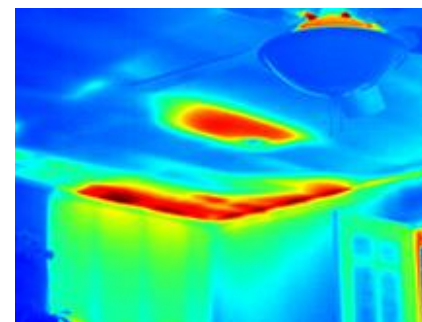
## THERMAL APPLICATIONS



ELECTRICAL INSPECTION



ROOF INSPECTION



INSULATION & HVAC INSPECTION

